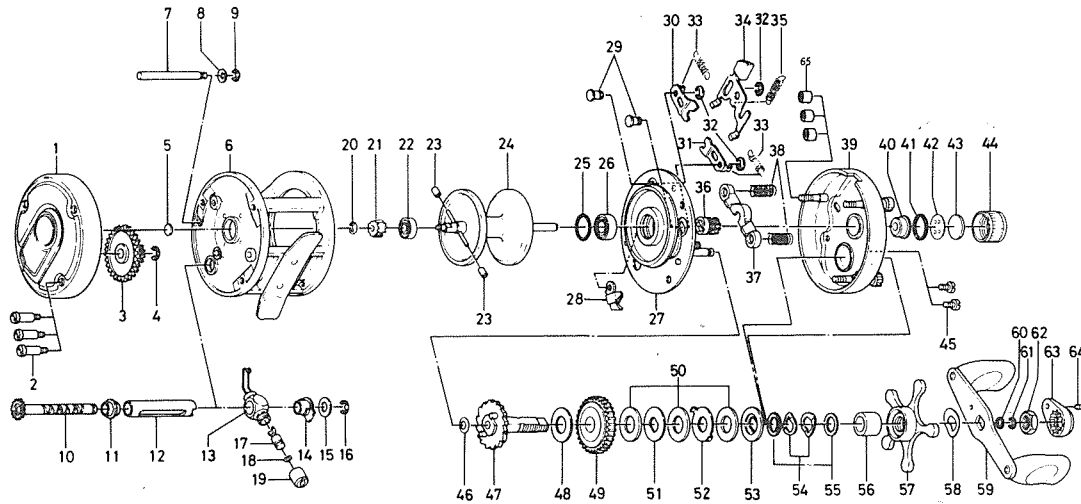


# BAITCASTING REEL **Millionaire 5HM**



**Key No.**

| Key No. | Parts No. | Parts Name               |
|---------|-----------|--------------------------|
| 1       | B33-8201  | Left side cover          |
| 2       | B15-1901  | Left side cover screw    |
| 3       | 413-0001  | Cog wheel                |
| 4       | 320-8002  | Cog wheel ret. ring      |
| 5       | 374-9102  | Bearing metal washer     |
| 6       | B33-8701  | Frame                    |
| 7       | B10-0401  | Frame post               |
| 8       | 373-7611  | Frame post spring washer |
| 9       | 320-5901  | Frame post retainer      |
| 10      | B10-0101  | Worm shaft               |
| 11      | B10-0301  | Shield bushing           |
| 12      | B09-9601  | Worm shield              |
| 13      | B09-9501  | Line guide               |
| 14      | B09-9701  | Worm shaft holder        |
| 15      | 373-2700  | Worm shaft holder washer |
| 16      | 320-8002  | Worm shaft retainer      |
| 17      | 121-4211  | Line guide pin           |
| 18      | 375-0800  | Line guide washer        |
| 19      | 341-5901  | Line guide nut           |
| 20      | B33-9801  | Spool gear ret. ring     |
| 21      | B33-9701  | Spool gear               |
| 22      | 637-2101  | Ball bearing             |
| 23      | B35-2701  | Brake collar             |
| 24      | B33-9402  | Spool                    |
| 25      | 171-1001  | "O" ring                 |
| 26      | B18-1601  | Ball bearing             |
| 27      | B33-6401  | Set plate                |
| 28      | 770-0301  | Anti-reverse claw        |
| 29      | 121-6801  | Set plate screw          |
| 30      | 040-4701  | Clutch stopper plate A   |
| 31      | 040-4801  | Clutch stopper plate B   |
| 32      | 320-8202  | Clut ret. ring           |
| 33      | 142-8503  | Set plate spring         |

**Key No.**

| Key No. | Parts No. | Parts Name                 |
|---------|-----------|----------------------------|
| 34      | B33-7301  | Clutch lever               |
| 35      | 142-8502  | Set plate spring B         |
| 36      | B33-7701  | Pinion gear                |
| 37      | B33-7501  | Pinion yoke                |
| 38      | B33-7601  | Pinion yoke spring         |
| 39      | B33-6007  | Right side cover           |
| 40      | B33-6301  | Bushing                    |
| 41      | B05-5201  | "O" ring                   |
| 42      | 373-7502  | Bearing metal ret. washer  |
| 43      | 374-7221  | Bearing metal washer       |
| 44      | B14-6601  | Right spool cap            |
| 45      | 353-1701  | Right side cover screw     |
| 46      | 373-7611  | Gear shaft washer A        |
| 47      | B33-7901  | Gear shaft                 |
| 48      | 374-9302  | Gear shaft washer B        |
| 49      | 413-8802  | Drive gear                 |
| 50      | 374-9305  | Drag washer A              |
| 51      | 374-9401  | Drag washer B              |
| 52      | 375-8701  | Drag washer C              |
| 53      | 376-0001  | Drag washer D              |
| 54      | 150-8901  | Spring washer              |
| 55      | 373-7803  | Drag washer E              |
| 56      | 502-0801  | Spacing sleeve             |
| 57      | 550-3101  | Star drag                  |
| 58      | 150-9001  | Handle washer              |
| 59      | 747-1701  | Handle                     |
| 60      | B41-1701  | Handle nut washer          |
| 61      | 320-8202  | Handle nut retainer        |
| 62      | B12-4701  | Handle nut                 |
| 63      | B14-2501  | Handle nut plate           |
| 64      | 351-1801  | Handle nut plate screw     |
| 65      | B42-7001  | Right side cover screw nut |