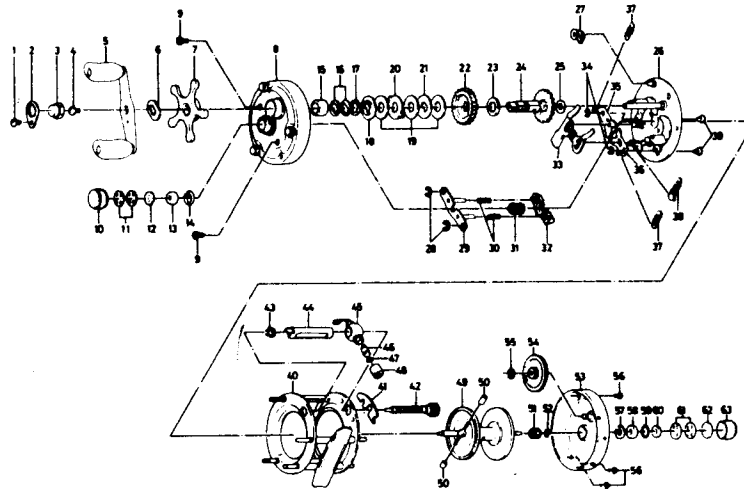


BAITCASTING REEL Millionaire 4H



| Key No. | Parts No. | Parts Name | Key No. | Parts No. | Parts Name |
|---------|-----------|-----------------------------------|---------|-----------|---------------------------|
| 1 | 353-8301 | Handle nut plate screw | 33 | 780-9601 | Clutch lever |
| 2 | 040-3201 | Handle nut plate | 34 | 320-8202 | Clutch ret. ring |
| 3 | 341-5801 | Handle nut | 35 | 040-4701 | Clutch stopper plate A |
| 4 | 353-0701 | Handle screw | 36 | 040-4801 | Clutch stopper plate B |
| 5 | 747-1701 | Handle | 37 | 142-8503 | Set plate spring A |
| 6 | 150-9001 | Handle washer | 38 | 142-8502 | Set plate spring B |
| 7 | 550-3101 | Star drag | 39 | 121-6801 | Set plate screw |
| 8 | 780-9410 | Right side cover | 40 | 780-9902 | Frame |
| 9 | 353-1701 | Right side cover screw | 41 | 151-4111 | Worm shaft lock arm |
| 10 | 342-0801 | Right spool cap | 42 | 710-7711 | Worm shaft |
| 11 | 373-7502 | Bearing metal ret. washer | 43 | 021-7201 | Shield bushing |
| 12 | 320-4101 | Bearing metal retainer A | 44 | 634-6111 | Worm shield |
| 13 | 634-5311 | Bearing metal | 45 | 781-0201 | Line guide |
| 14 | 320-6501 | Bearing metal ret. ring | 46 | 121-4211 | Line guide pin |
| 15 | 501-8701 | Spacing sleeve | 47 | 375-0800 | Line guide washer |
| 16 | 150-8901 | Spring washer | 48 | 341-5901 | Line guide nut |
| 17 | 373-7803 | Drag washer A | 49 | 731-2901 | Spool |
| 18 | 376-0001 | Drag washer B | 50 | 500-8011 | Brake collar |
| 19 | 374-9305 | Drag washer C | 51 | 402-2001 | Spool gear |
| 20 | 375-8701 | Drag washer D | 52 | 320-4202 | Spool gear ret. ring |
| 21 | 374-9401 | Drag washer E | 53 | 781-0323 | Left side cover |
| 22 | 413-0312 | Drive gear | 54 | 413-0001 | Cog wheel |
| 23 | 374-9303 | Gear shaft washer A | 55 | 320-8002 | Cog wheel ret. ring |
| 24 | 725-4611 | Gear shaft | 56 | 352-4221 | Left side cover screw |
| 25 | 373-7611 | Gear shaft washer B | 57 | 320-6501 | Bearing metal ret. ring |
| 26 | 780-9501 | Set plate | 58 | 634-5311 | Bearing metal |
| 27 | 770-0301 | Anti-reverse claw | 59 | 805-5201 | "O" ring |
| 28 | 320-8002 | Pinion yoke guide plate ret. ring | 60 | 375-2401 | Bearing metal retainer B |
| 29 | 780-9701 | Pinion yoke guide plate | 61 | 373-7502 | Bearing metal ret. washer |
| 30 | 143-9311 | Pinion yoke spring | 62 | 374-7221 | Rubber washer |
| 31 | B24-3201 | Pinion gear | 63 | 342-1001 | Left spool cap |
| 32 | 635-9201 | Pinion yoke | | | |